

# HP Jet Fusion 580/380 Color and 540/340 3D Printers

Produce functional parts in full color, black or white — with voxel control—in a fraction of the time<sup>1</sup>



The cost-effective HP 3D printer tailored for small/medium-sized product development teams, design firms, and universities.

Now you can prototype and produce with the same technology.

## Produce accurate, functional parts with intricate detail

- Produce engineering-grade thermoplastic parts with optimal mechanical properties
- Achieve fine detail and high dimensional accuracy for small features
- Access a wide range of future materials and applications with the HP Multi Jet Fusion Open Platform
- Get accurate and repeatable results

## Accelerate your design cycle—create, test, iterate in just hours

- Increase your productivity—produce multiple prototype iterations in the same time it takes to print a single part<sup>1</sup>
- Access convenient in-house automated production with the most compact HP Jet Fusion 3D devices
- Get the parts you want when you need them, easily, reliably, and predictably
- Move smoothly from prototyping to final part production with the same HP Multi Jet Fusion platform
- Get immediate access to support and comprehensive training with affordable HP Jet Fusion 3D Solution Services

## Create full spectrum color parts with a voxel-control system poised for future innovation

- Produce brilliant, full-color functional parts while maintaining optimal mechanical properties
- Stay ahead with a future-ready technology, configurable for voxel control beyond color

# The most compact HP Jet Fusion 3D devices, designed for convenient in-house automated production

## Full color

HP Jet Fusion 580/380 Color 3D Printers  
8-agent configurability

## White

HP Jet Fusion 540/340 3D Printers  
4-agent configurability



Image shows the HP Jet Fusion 580 Color 3D Printer

## Materials

Access a wide range of future materials and applications with the HP Multi Jet Fusion Open Platform.

## HP Jet Fusion 3D Solution Services

Accelerate your design cycle with immediate access to support, affordable solution services, and comprehensive training.

## Technical information

### HP Jet Fusion 580/380 Color and 540/340 3D Printers

<b>Printer performance</b>	Technology	HP Multi Jet Fusion technology
	Effective building volume	<b>580/ 540 printers:</b> up to 7.5 x 13.1 x 9.8 inches (190 x 332 x 248 mm) <b>380/340 printers:</b> up to 7.5 x 10 x 9.8 inches (190 x 254 x 248 mm)
	Layer thickness	0.003 inches (0.08 mm)
	Printhead resolution	1200 dpi
<b>Dimensions (w x d x h)</b>	Printer	61.6 x 37.6 x 59.3 inches (1565 x 955 x 1505 mm)
	Shipping	69.7 x 45 x 79.3 inches (1770 x 1143 x 2013 mm)
	Operating area	121.6 x 116.7 x 96 inches (3089 x 2964 x 2438 mm)
<b>Network<sup>2</sup></b>	Gigabit Ethernet (10/100/1000Base-T), supporting the following standards: TCP/IP, DHCP (IPv4 only), TLS/SSL	
<b>Hard disk</b>	HDD 1TB (AES-256 encrypted, disk wipe DoD 5520M) & SSD 1TB (AES-256 encrypted)	
<b>Software</b>	Included software	HP SmartStream 3D Build Manager HP SmartStream 3D Command Center
	Supported file formats	3MF, STL, OBJ, VRML v.2
<b>Power</b>	Consumption	<b>580/540 printers:</b> 4.5-6.3 kW (typical)
	Requirements	Two dedicated circuits configuration: input voltage 230 - 240 V (line-to-line) +/- 10%, 16 A max, 50/60 Hz; One dedicated circuit configuration: input voltage 200 - 240 V (line-to-line) +/- 10%, 36 A max, 50/60 Hz
<b>Certification</b>	Safety	NA (US & Canada): IEC 61010-1 compliant, NRTL certified; EU: Machinery Directive, EN 61010-1, EN 60204-1, EN ISO 12100 and EN ISO 13849-1 compliant
	Electromagnetic compatibility	EN 55032:2012 Class A; CISPR 32:2012 Class A; FCC CFR 47 Part 15 Class A; ICES-003, Issue 6 Class A; EN 61000-3-12:2011; IEC 61000-3-12:2011; EN 61000-3-11:2000; IEC 61000-3-11:2000; EN 55024:2010; CISPR 24:2010
	Environmental	REACH compliant
<b>Warranty &amp; Service coverage included</b>	One-year limited hardware warranty	



Data courtesy of FreshFiber



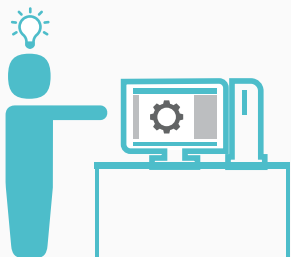
Data courtesy of Phoenix Children's Hospital: Heart of Jemma

Produce functional parts in full color<sup>3</sup>—with voxel control—in a fraction of the time<sup>1</sup>

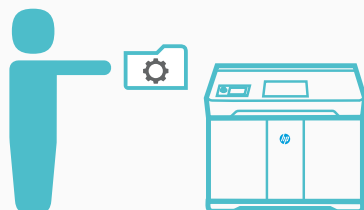
# Reinventing 3D printing

## HP Jet Fusion 580/380 Color and 540/340 3D Printers

**1 Prepare designs:**  
Open your 3D models and check for errors with the easy-to-use HP SmartStream 3D Build Manager.



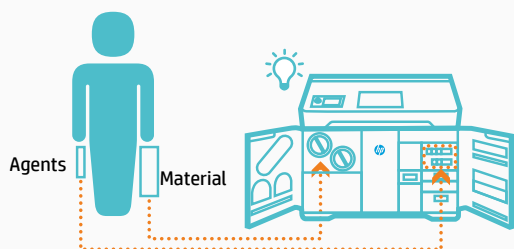
**2 Send to print:**  
Pack your models in the 3D Build Manager and press "Send to print" to submit your job to the printer.



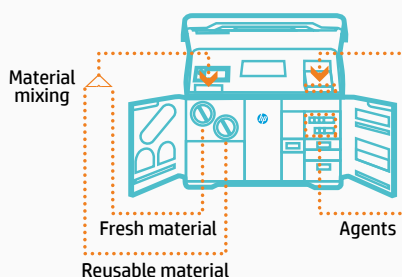
**3 Select job:**  
Choose your print job at the printer.



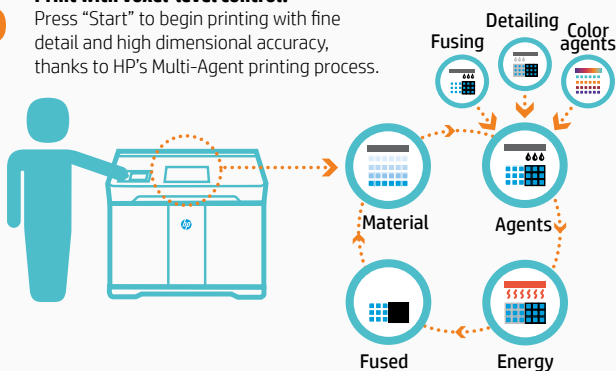
**4 Add supplies:**  
Insert 3D materials and agent cartridges into the printer as needed.



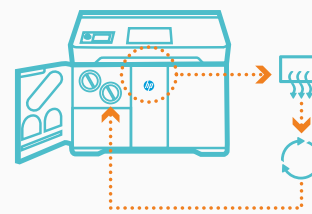
**5 Automated material mixing and loading:**  
The printer automatically mixes fresh and reusable material and loads it into the print area. Agents are automatically loaded into the print area as well.



**6 Print with voxel-level control:**  
Press "Start" to begin printing with fine detail and high dimensional accuracy, thanks to HP's Multi-Agent printing process.



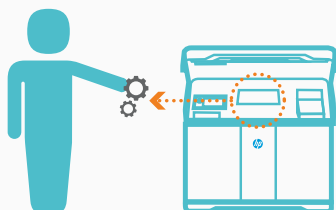
**7 Automated material extraction and reclamation:**  
After printing is finished, the printer automatically extracts and reclaims unused material for future builds. You can use up to 80% reusable material in builds while maintaining consistent performance.\*



**8 Job done:**  
You receive an alert when your parts are ready and the reclamation process is complete.



**9 Retrieve parts:**  
Simply open the printer and retrieve your parts for final cleaning and post processing.



**10 HP Solutions Services – with you at every step:**  
Accelerate your design cycle with immediate access to support, affordable solution services, and comprehensive training.



keep reinventing

\*HP Jet Fusion 3D printing solutions using HP 3D High Reusability CB PA 12 provide 80% post-production surplus powder reusability, producing functional parts batch after batch.

## Ordering information

	HP Jet Fusion 580 Color 3D Printer		HP Jet Fusion 380 Color 3D Printer		HP Jet Fusion 540 3D Printer		HP Jet Fusion 340 3D Printer	
<b>Printer</b>	M2K85A	HP Jet Fusion 580 Color 3D Printer	M2K87A	HP Jet Fusion 380 Color 3D Printer	M2K86A	HP Jet Fusion 540 3D Printer	M2K88A	HP Jet Fusion 340 3D Printer
<b>Original HP Printheads</b>	V1Q67A	HP 3D400 Printhead Kit	V1Q67A	HP 3D400 Printhead Kit	V1Q67A	HP 3D400 Printhead Kit	V1Q67A	HP 3D400 Printhead Kit
	V1Q76A	HP 3D450 Color Printhead Kit	V1Q76A	HP 3D450 Color Printhead Kit	N/A	N/A	N/A	N/A
<b>Original HP Agents</b>	V1Q69A	HP 3D400 250-ml Detailing Agent	V1Q69A	HP 3D400 250-ml Detailing Agent	V1Q69A	HP 3D400 250-ml Detailing Agent	V1Q69A	HP 3D400 250-ml Detailing Agent
	V1Q70A	HP 3D450 250-ml Black Agent	V1Q70A	HP 3D450 250-ml Black Agent	N/A	N/A	N/A	N/A
	V1Q71A	HP 3D400 500-ml Fusing Agent	V1Q71A	HP 3D400 500-ml Fusing Agent	V1Q71A	HP 3D400 500-ml Fusing Agent	V1Q71A	HP 3D400 500-ml Fusing Agent
	V1Q72A	HP 3D400 500-ml Bright Fusing Agent	V1Q72A	HP 3D400 500-ml Bright Fusing Agent	V1Q72A	HP 3D400 500-ml Bright Fusing Agent	V1Q72A	HP 3D400 500-ml Bright Fusing Agent
	V1Q73A	HP 3D450 250-ml Yellow Agent	V1Q73A	HP 3D450 250-ml Yellow Agent	N/A	N/A	N/A	N/A
	V1Q74A	HP 3D450 250-ml Magenta Agent	V1Q74A	HP 3D450 250-ml Magenta Agent	N/A	N/A	N/A	N/A
	V1Q75A	HP 3D450 250-ml Cyan Agent	V1Q75A	HP 3D450 250-ml Cyan Agent	N/A	N/A	N/A	N/A
<b>Original HP 3D high reusability materials</b>	V1R30A	HP 3D HR CB PA 12 10L/4 kg Material <sup>4</sup>	V1R30A	HP 3D HR CB PA 12 10L/4 kg Material <sup>4</sup>	V1R30A	HP 3D HR CB PA 12 10L/4 kg Material <sup>4</sup>	V1R30A	HP 3D HR CB PA 12 10L/4 kg Material <sup>4</sup>
<b>HP 3D Services</b>	U9ZN6E	HP Installation w/Introduction to Basic Operation Service for Jet Fusion 300/500 3D Printers	U9ZN6E	HP Installation w/Introduction to Basic Operation Service for Jet Fusion 300/500 3D Printers	U9ZN6E	HP Installation w/Introduction to Basic Operation Service for Jet Fusion 300/500 3D Printers	U9ZN6E	HP Installation w/Introduction to Basic Operation Service for Jet Fusion 300/500 3D Printers
	U9ZN8E	HP Ramp up Service for Jet Fusion 300/500 3D Printers Solution	U9ZN8E	HP Ramp up Service for Jet Fusion 300/500 3D Printers Solution	U9ZN8E	HP Ramp up Service for Jet Fusion 300/500 3D Printers Solution	U9ZN8E	HP Ramp up Service for Jet Fusion 300/500 3D Printers Solution
	U9ZN9E	HP Advanced Operation Training Service for Jet Fusion 300/500 3D Printers (HP Training Center)	U9ZN9E	HP Advanced Operation Training Service for Jet Fusion 300/500 3D Printers (HP Training Center)	U9ZN9E	HP Advanced Operation Training Service for Jet Fusion 300/500 3D Printers (HP Training Center)	U9ZN9E	HP Advanced Operation Training Service for Jet Fusion 300/500 3D Printers (HP Training Center)
	U9ZP2E	HP 3 year 2nd Business Day onsite Hardware Support w/DMR for Jet Fusion 580 Color 3D	U9ZQ2E	HP 3 year 2nd Business Day onsite Hardware Support w/DMR for Jet Fusion 380 Color 3D	U9ZQ7E	HP 3 year 2nd Business Day onsite Hardware Support w/DMR for Jet Fusion 540 3D	U9ZP7E	HP 3 year 2nd Business Day onsite Hardware Support w/DMR for Jet Fusion 340 3D
<b>HP 3D Long Term Consumables</b>	U9ZR1E	HP 3D400 Air Inlet Filter	U9ZR1E	HP 3D400 Air Inlet Filter	U9ZR1E	HP 3D400 Air Inlet Filter	U9ZR1E	HP 3D400 Air Inlet Filter
	U9ZR2E	HP 3D400 Print Area Filter	U9ZR2E	HP 3D400 Print Area Filter	U9ZR2E	HP 3D400 Print Area Filter	U9ZR2E	HP 3D400 Print Area Filter
	U9ZR3E	HP 3D400 Air Exhaust Filter	U9ZR3E	HP 3D400 Air Exhaust Filter	U9ZR3E	HP 3D400 Air Exhaust Filter	U9ZR3E	HP 3D400 Air Exhaust Filter
	U9ZR5E	HP 3D400 Printhead Cleaning Roll	U9ZR5E	HP 3D400 Printhead Cleaning Roll	U9ZR5E	HP 3D400 Printhead Cleaning Roll	U9ZR5E	HP 3D400 Printhead Cleaning Roll
	U9ZR6E	HP 3D400 Lamp Module	U9ZR6E	HP 3D400 Lamp Module	U9ZR6E	HP 3D400 Lamp Module	U9ZR6E	HP 3D400 Lamp Module



3D Printer Sales & Prototyping Services

[cimquest-inc.com](http://cimquest-inc.com)

Phone: 866-277-8778  
Email: [sales@cimquest-inc.com](mailto:sales@cimquest-inc.com)

Offices in NJ, PA, MA  
VA & OH coming soon

1. Based on internal and third-party testing for HP Jet Fusion 580 and 540 3D Printers, printing and cooling time is a fraction of the time of the printing times of comparable plastic fused deposition modeling (FDM), stereolithography (SLA), and material jetting solutions from \$20,000 USD to \$120,000 USD on market as of June, 2017. Testing variables for the HP Jet Fusion 580 3D Printer: Part quantity: 1 full build chamber of parts from HP Jet Fusion 3D at 10% of packing density versus same number of parts on above-mentioned competitive devices; Part size: 30 cm<sup>3</sup>; Layer thickness: .08 mm/0.003 inches. Competitor testing variables are comparable.
2. The HP Jet Fusion 3D Printing Solution should be connected to the HP Cloud in order to enable the correct functioning of the printer and to offer better support.
3. For HP Jet Fusion 580/380 Color 3D Printers only.
4. Liters refers to the materials container size and not the actual materials volume. Materials are measured in kilograms.

© Copyright 2018 HP Development Company, L.P.

The only warranties for HP products and services are set forth in the express warranty statements accompanying such products and services. Nothing herein should be construed as constituting an additional warranty. HP shall not be liable for technical or editorial errors or omissions contained herein.

4AA7-1970ENA, March 2018

This is an HP Indigo digital print.

